

BORA |



LINCOLN HIGH SCHOOL

Design Advisory Group Meeting Seven

Project Update
January 24, 2019

AGENDA

Welcome / Reminders	5 minutes	Erik Gerding
Cost Estimates & VE Workshop	10 minutes	Bora / PPS
Pathway to Budget	10 minutes	Bora / PPS
DAR & Next Steps	5 minutes	Bora
Review of Site & Building Design	10 minutes	Bora
Interactive Exercise: Lincoln Hertiage	40 minutes	Bora
Public Comment Period	10 minutes	All
Adjourn		

DAG CHARTER

Purpose and Role

The Design Advisory Group (DAG) will advise the Lincoln Modernization Project Team in developing a comprehensive, equitable, integrated and visionary school design with authentic school community engagement. The District's project team will work directly with the DAG to ensure that their concerns and aspirations are understood and considered. The DAG will be part of the multifaceted design & stakeholder engagement process including District & school staff, students, parents, community members and the consultant design team. This process will include consideration of background guiding documents, building, site, budget and regulatory requirements that must be used in evaluating design options.

DAG members' role and responsibilities:

- Attend meetings to advise project team on school community concerns, issues, goals and aspirations.
- Abide by code of conduct for DAG.
- Report to and bring feedback from groups and organizations DAG members represent.
- Advise on effective communication strategies to reach entire school community for project process and public participation events.
- May assist project team with public open houses.
- May assist with groundbreaking and grand opening events.

Project Scope

Following the passage of the 2017 capital bond program, PPS is moving forward with the planning, design and construction of a modernized Lincoln High School. Construction would begin in the summer of 2020.

Membership

The design of Lincoln High School will consist of three primary phases: Schematic, Design Development and Construction phases. DAG members will be expected to serve approximately eight months throughout the programming, schematic design and design development phases. The design team may elect to inform DAG members of notable project changes after the design development phase.

Lincoln High School and District staff will select and appoint DAG members through an open application process. Additional applicants may be recruited to ensure a balanced and full representation of the school community.

The DAG will nominate a **Chairperson** or **Co-Chairpersons** to assist in DAG meeting agenda & presentation review, steering planning meetings and meeting protocol. *PPS staff/employees and Board members may not serve as Chairperson/Co-Chairpersons.*

The DAG should include at least one member from each of the following stakeholder groups: teachers, students, parents, middle school cluster parents, neighborhood association, business association, cultural associations, school program, existing and potential program and/or capital partners, alumni, the school principal and school board representatives.

Portland Public Schools is an equal opportunity educator and employer.

A member wishing to resign from the DAG shall do so in writing to the District's project manager; e-mail is acceptable.

If a member fails to attend two consecutive DAG meetings without reasonable excuse, or otherwise becomes unable to serve on the DAG, the District's project manager may declare the position on the DAG to be vacant and appoint another appropriate person to the DAG.

DAG Meeting Schedule & Format

Estimated commitments include: Approximately eight DAG meetings, one public open house and one public workshop during the 2017-2018 school year, with other events possibly being scheduled for outreach. Timing of these events will be aligned with overall project schedule and other school and district stakeholder engagement.

Meetings are held during programming, schematic design and design development. DAG will be informed of significant project scope changes that may occur later in design and construction.

DAG meetings will be held at Lincoln High School unless noted otherwise.

DAG meetings are open to the public and provide an opportunity for public comment; meeting materials and meeting notes will be posted online.

Opportunity for public comment will be provided at the end of each meeting. Public comment will be limited to 10 minutes with a maximum of 3 minutes of testimony per person. Those wishing to provide testimony to the DAG will need to sign up at the meeting. Testimony will occur in order of arrival. Comment cards will be provided at each meeting. The public is encouraged to provide written comments to the DAG.

Additional Public Participation Opportunities

Design workshops and open houses will be open to the wider school community as well as the general public. Everyone is encouraged to attend these events.

- The purpose of design workshops is to obtain public feedback on analysis, alternatives and decisions.
- The purpose of open houses is to inform the public on project process and progress.

Field and/or building tours

A number of educational facility tours will be set up for DAG members prior to or during schematic design. These will be optional local (or regional) examples of middle/high school design that can be used to inform discussions and broaden the knowledge base.

Project Team

The project team will be comprised of architects, engineers, planners, the Office of School Modernization (OSM) project manager and department staff. They will provide agendas,

Portland Public Schools is an equal opportunity educator and employer.

...ions; the project team will also facilitate discussions, record ...s for DAG meetings and public events.

District's primary point of contact for the project, will oversee ...tion events. All communications from DAG members outside ...d to the PPS project manager.

The responsibility of the Office of School Modernization in ...dership as required. DAG members perform in an advisory ...representatives.

Portland Public Schools is an equal opportunity educator and employer.

DAG CODE OF CONDUCT

Expectations Regarding Committee Member Behavior

- Make every effort to attend every meeting, to arrive on time, and to be prepared.
- If you know you must be absent, advise the committee support staff in advance.
- Do not criticize board members, staff members, other committee members, or any citizen in public. Letters and e-mails to any district personnel or elected official is a public document.
- Speak when recognized by the facilitator. Don't interrupt or engage in side conversations when another committee member is speaking.
- Be brief and to the point.
- Say what you mean and mean what you say: no political speeches; don't posture or grandstand.
- Clearly explain how you came to your position on a subject and how it serves the public interest.
- Share credit generously. Spread opportunities to get positive recognition.
- Support the legitimacy of committee outcomes, even those you don't agree with. When a decision is made, move on.
- Outside of committee meetings, members must be crystal clear whether they are speaking as an individual or have been recognized by the committee to speak on their behalf.
- Respect the different styles of fellow committee members.
- Be open to changing your mind based on new information.
- Take personal responsibility for encouraging respectful behavior among your fellow committee members.
- Recognize that you are seen as committee members at all times during the process, no matter how you may see yourself.
- Whenever you put anything in writing, assume that everyone in the city is looking over your shoulder.
- Everyone does not have to weigh in on every question. Sometimes it's OK to just be present.
- Affirm the dignity and worth of the services rendered by Portland Public Schools and maintain a constructive, creative and practical attitude toward PPS affairs and a deep sense of social responsibility as committee members.
- Recognize that the chief function of PPS at all times is to serve the best interest of all its students.
- Refrain from activities which undermine public confidence.
- Be respectful of all people at all times.

Violation of these committee rules of conduct will result first in a written warning and may ultimately result in removal from the committee.

DAG RULES OF ENGAGEMENT

Participation limited to DAG members only

Public is invited to observe & comment at the end of the meeting

DAG is an advisory group, not a decision-making group

Respect the outcomes of prior Master Plan Committee & DAG processes



75% SD COST ESTIMATES

Hard Cost Budget

\$186.8 M

Estimates

\$209.4 M (ACC) & \$218.5 M (HCC)

Variance

\$22.6 - \$31.7 M

75% SD COST ESTIMATES - INCREASES

COST INCREASE ITEMS

80% Included:

Metals	\$3.9-5.0m
Structural Steel	
Stud Framing, Engineered Connections	
Openings	\$4.7-4.9m
Doors and Windows	
Secured Openings	
Access Panels	
Finishes	\$5.9-7.2m
Flooring	
Ceiling Systems	
Wall Protection	
Electrical / Communications	\$5.5-9.1m
Feeders and Conduit	
Panels	
Lighting	
Markups / Risk	\$3.7-4.8m
Percentage Based	
Site Conditions	
Design Assumptions	

75% SD COST ESTIMATES - ACTIONS

Guiding Principles for Value Engineering and Target Value Design

1. Maintain full program.
2. Engage a Value Engineering Workshop process.
3. Create more efficient building:
 - Exchange double-height spaces for program spaces.
 - Exchange Courtyard for program spaces.
4. Design to budget with Target Value Design strategy.

SAVE VE WORKSHOP

PROJECT TEAM APPROACH TO VALUE ENGINEERING (VE) December 10-14 Facilitated VE Workshop



SAVE VE WORKSHOP

SAVE (Society of American Value Engineering) VE Workshop - A Systematic and Structured Approach

Information Phase

Function Analysis Phase

Creative Phase

Evaluation Phase

Development Phase

Presentation / Implementation

Condition Space (m)	Condition
CS-01 Delete under floor plenum Change to Overhead-supply plenum	CS-16 Reduce platform
CS-02 Expand temp. thresholds performance	CS-17 Eliminate Parapet HANDLES
CS-03 <u>Reduce # of</u> - REDUCE # OF AIR HANDLERS	CS-18 REDUCE FOR GRE
CS-04 Delete Radiant slabs	CS-19 USE ALTE FOR SINK
CS-05 REDUCE LOADS BY CHANGING FACADE - (combination of options)	CS-20 USE SINGLE INDIVIDUAL
CS-06 Change material from Copper to PVC - plumbing and Hydronics	CS-21 REDUCE S w/ opening
CS-07 REDUCE A/c	CS-22 Consolidate units FR
CS-08 Eliminate A/c	CS-23 REDUCE / POUMS

(m)	Enclosed space	Accom
ES-10	REDUCE TRACTIC w/ SIDING	AF-01 DELETE w/ 2 P
ES-11	REDUCE GLAZING FROM 38% to 30%	AF-02 RAISE AREA T WALLS
ES-12	Replate ELIMINATE VERT SHADE FINS	AF-03 ELIMINATE EDGE ON
ES-13	Reduce FIRE-Rated glazing by 30%	AF-04 MOVE TR CUT + WA
ES-14	SUSPEND LINEAR wood CEILING. REDUCE TYPE 31 to 1400 ft	AF-05 CHANGE
ES-15	Infill COURTYARD w/ LIBRARY to eliminate 3rd floor on E. SIDE. SAVES 10,000 ft	AF-06 Remove BUILDING
ES-16	ELIMINATE 1 ELEVATOR FROM TOWER	AF-07 ELIMINATE GRAND ST
ES-17	ELIMINATE 2 ELEVATORS FROM TOWER	AF-08 DELETE O
	GREEN ROOF	AF-09 ELIMINATE SHELTERS

Accommodate Facilities	Power
AF-01 DELETE PRACTICE FIELD w/ 2 POLES	PF-01 ALLOW TYPE
AF-02 RAISE TRACK + FIELD AREA TO REDUCE CUT + WALLS	PF-02 DELETE POLES FIELD
AF-03 ELIMINATE ALUMINUM EDGE ON TRACK	PF-03 Delete
AF-04 MOVE TRACK WEST TO REDUCE CUT + WALLS	PF-04 OBTAIN REDUCE
AF-05 CHANGE HANDRAIL DESIGN	PF-05 REDUC
AF-06 Remove piles at Field BUILDING	PF-06 REDUCE
AF-07 ELIMINATE PILES AT THE GRAND STAND	PF-07
AF-08 DELETE OVERLOOK	
AF-09 ELIMINATE PILES AT BIKE SHELTERS	

Creative Phase Board Examples - each idea was evaluated and ranked based on functional requirements and potential savings.

PROJECT VALUE ENGINEERING - RESULTS

COST SAVINGS

VE Workshop Items \$24.1 million

Including 52 opportunities \$250,000 and up

Post-Workshop Items \$5.3 million

Including 80 + opportunities \$249,000 and below

TOTAL ~ \$29.5 million

PATHWAY TO BUDGET

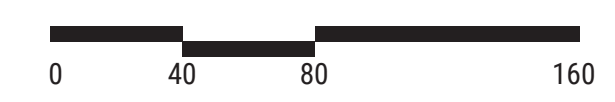
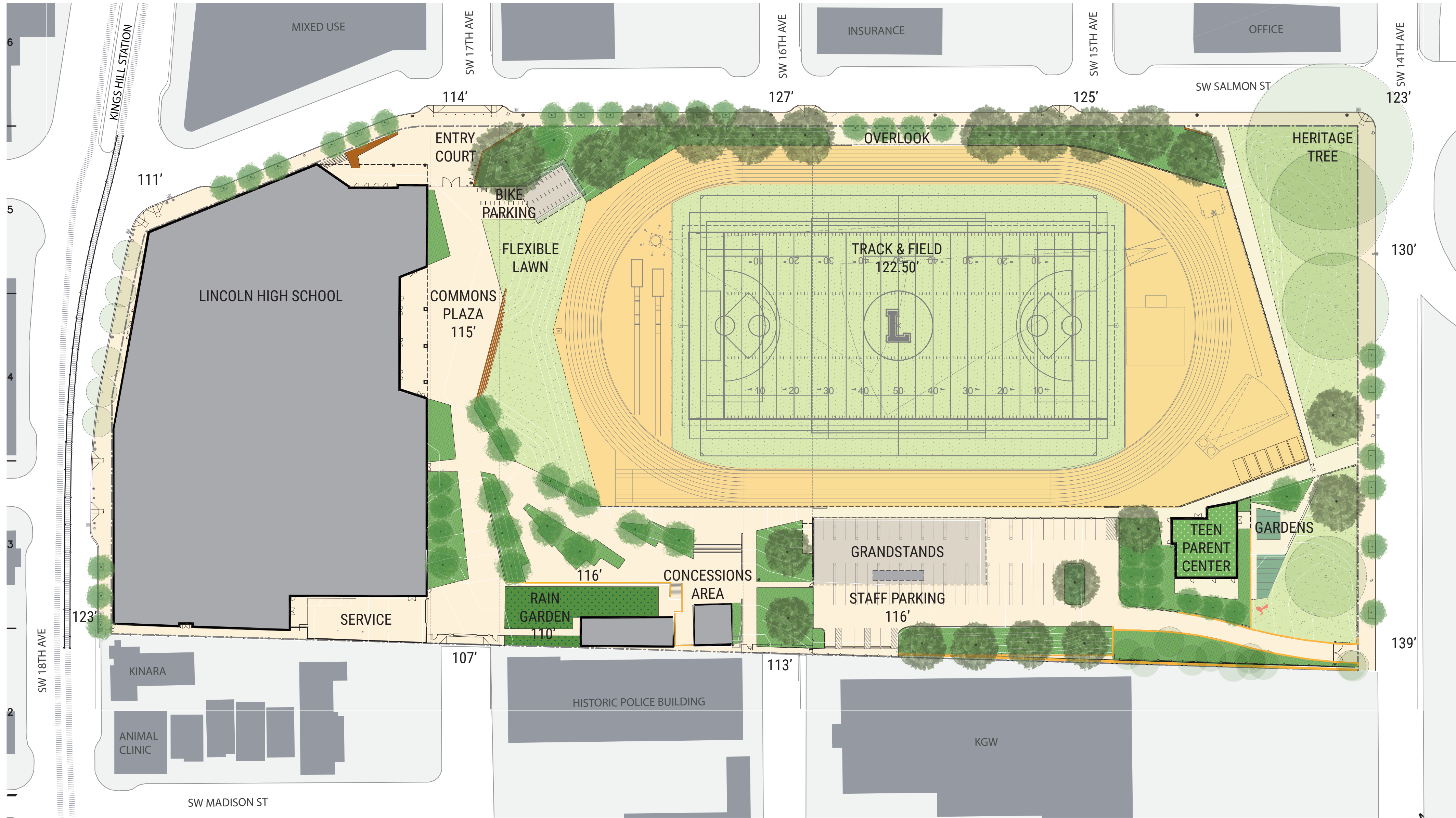
PATHWAY TO BUDGET

1. Reduce hard costs by Implementing all accepted VE opportunities.
2. Continue analysis for remaining VE opportunities.
3. Engage early trade partners to mitigate risk, including Mechanical and Facade subcontractors.
4. Use Target Value Design to maintain cost control

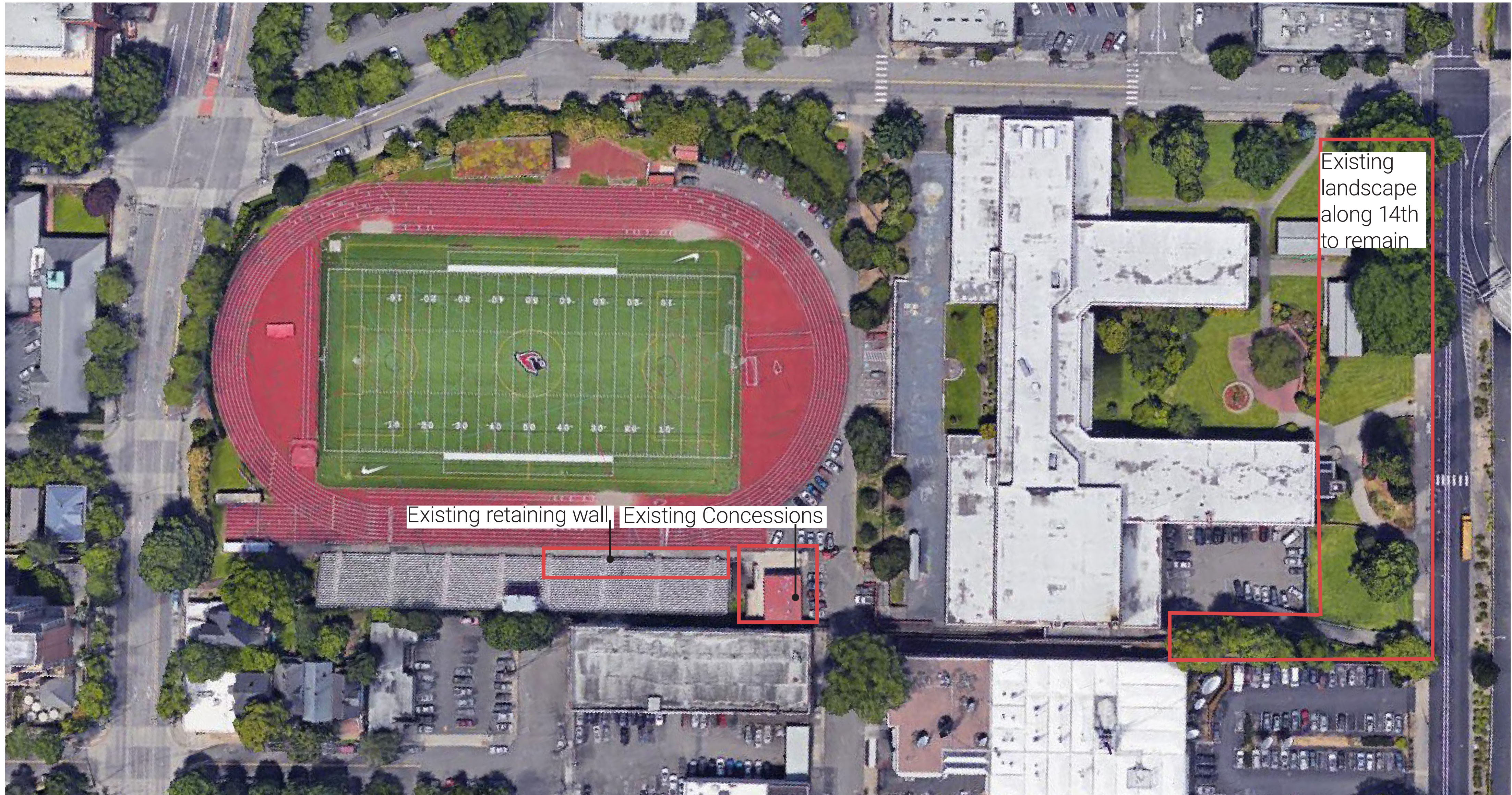
SCHEDULE

	Master Plan	Jan. - July 2016
	Pre-Design / Due Diligence	Oct. 2016 - March 2017
	Programming / Concepts	Nov. 2017 - March 2018
	Board of Education Approval Process	June - August 2018
	Schematic Design	June - Nov 2018
CURRENT PHASE	Design Development	Nov. 2018 -May 2019
	Construction Documents	May - Dec. 2019
	Early Permit Set	Aug 2019
	Construction Phase 1	Early 2020 - Spring 2022
	Move In	Summer 2022
	Construction Phase 2	Fall 2022 - Summer 2023
	Project Completion	Summer 2023

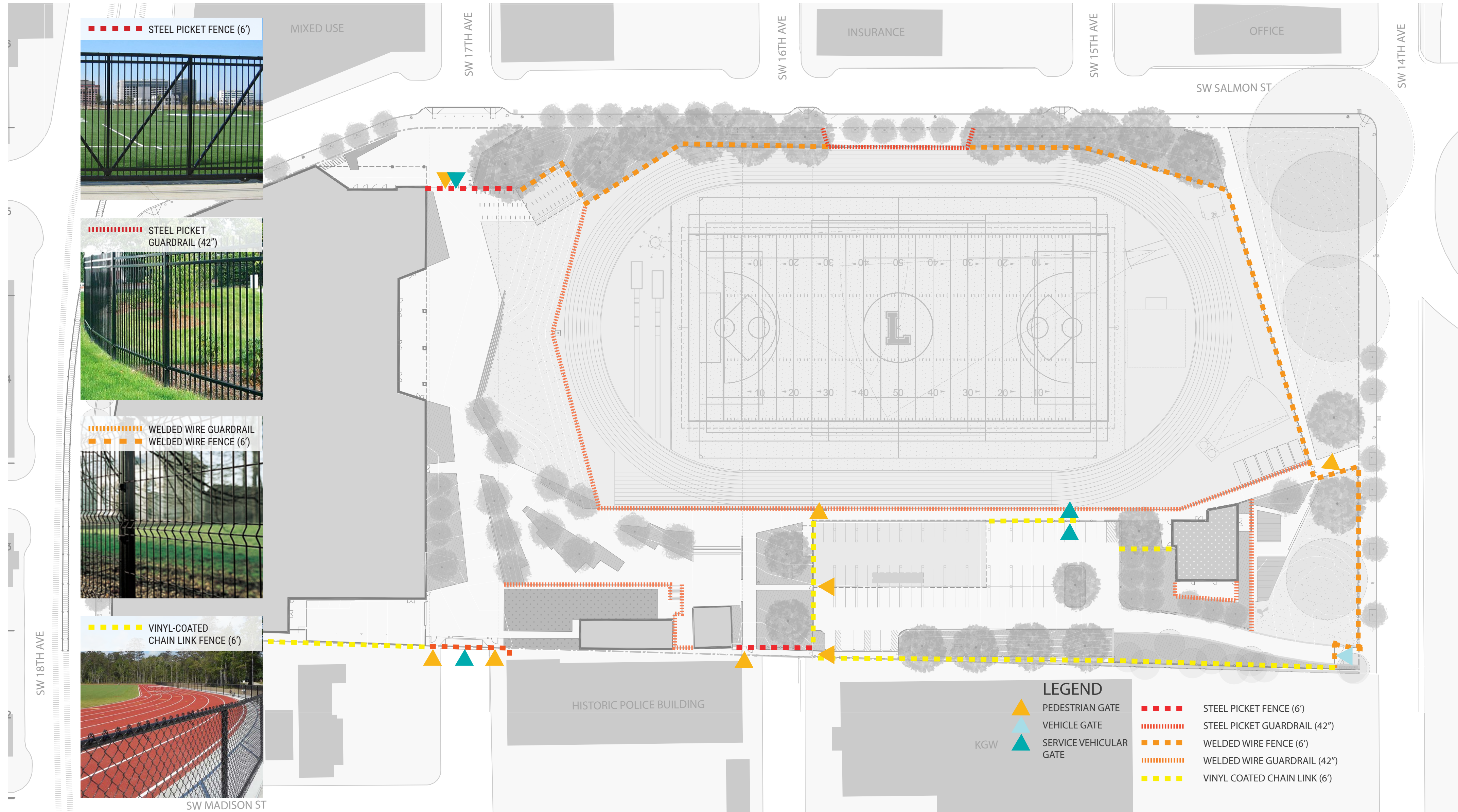
SITE PLAN



AREAS TO REMAIN ON EXISTING SITE



SITE ACCESS



STEEL PICKET FENCE (6')



STEEL PICKET GUARDRAIL (42")



WELDED WIRE GUARDRAIL
WELDED WIRE FENCE (6')

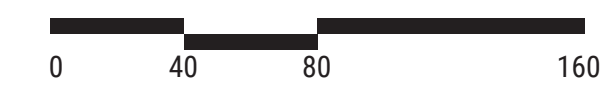


VINYL-COATED CHAIN LINK FENCE (6')

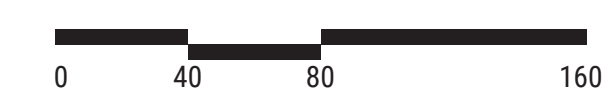
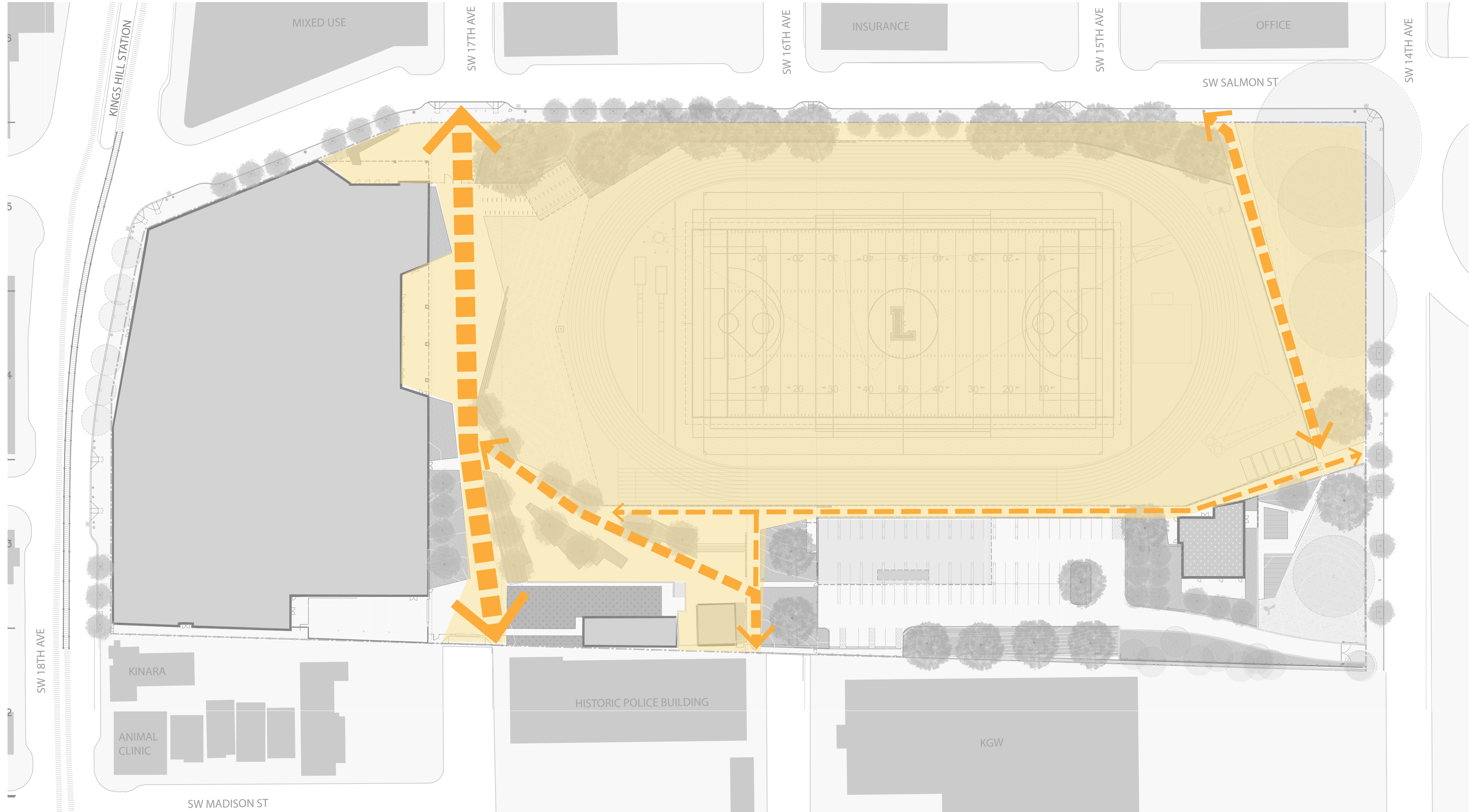


LEGEND

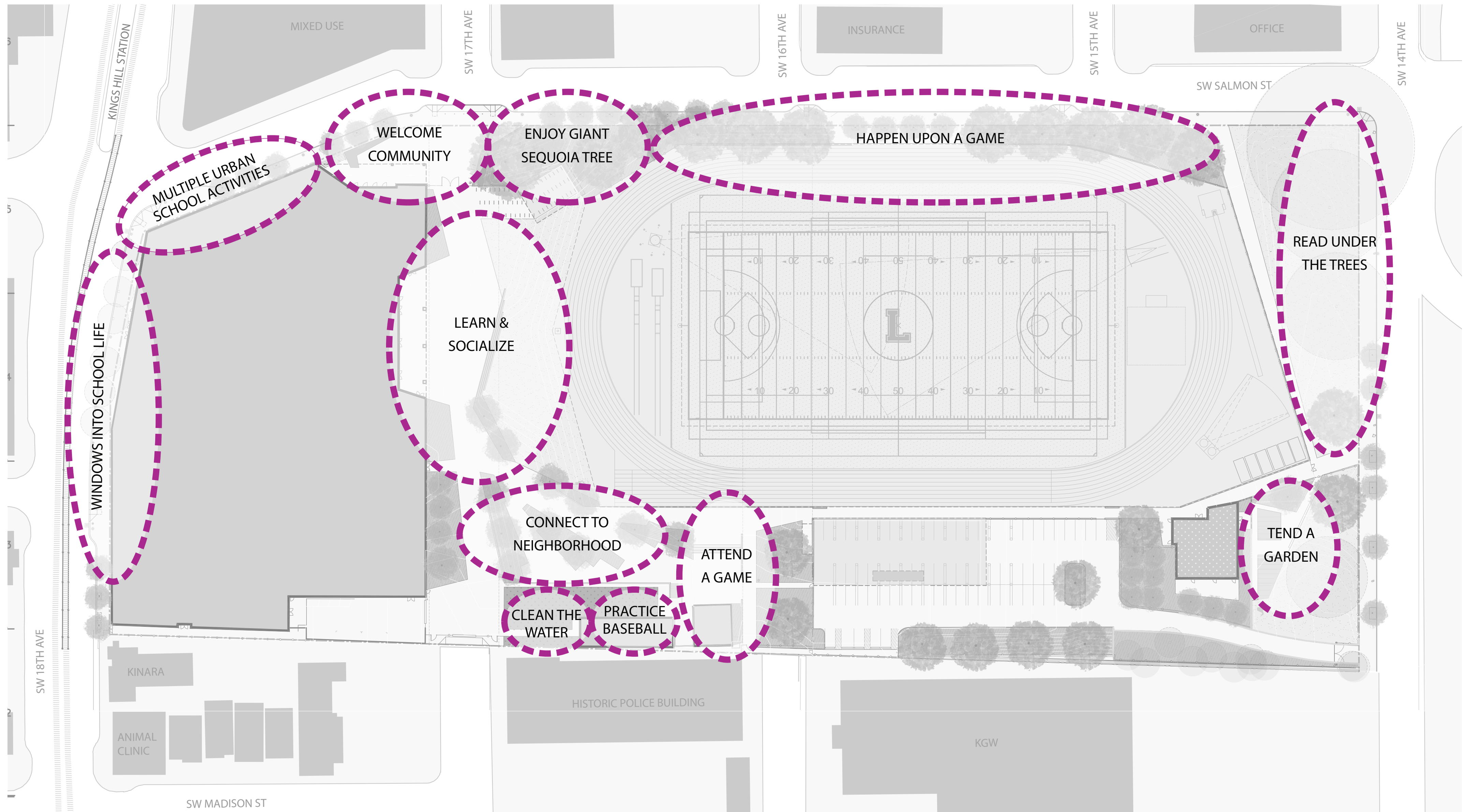
- PEDESTRIAN GATE
- VEHICLE GATE
- SERVICE VEHICULAR GATE
- STEEL PICKET FENCE (6')
- STEEL PICKET GUARDRAIL (42")
- WELDED WIRE FENCE (6')
- WELDED WIRE GUARDRAIL (42")
- VINYL COATED CHAIN LINK (6')



SITE CIRCULATION AND PUBLIC SPACE



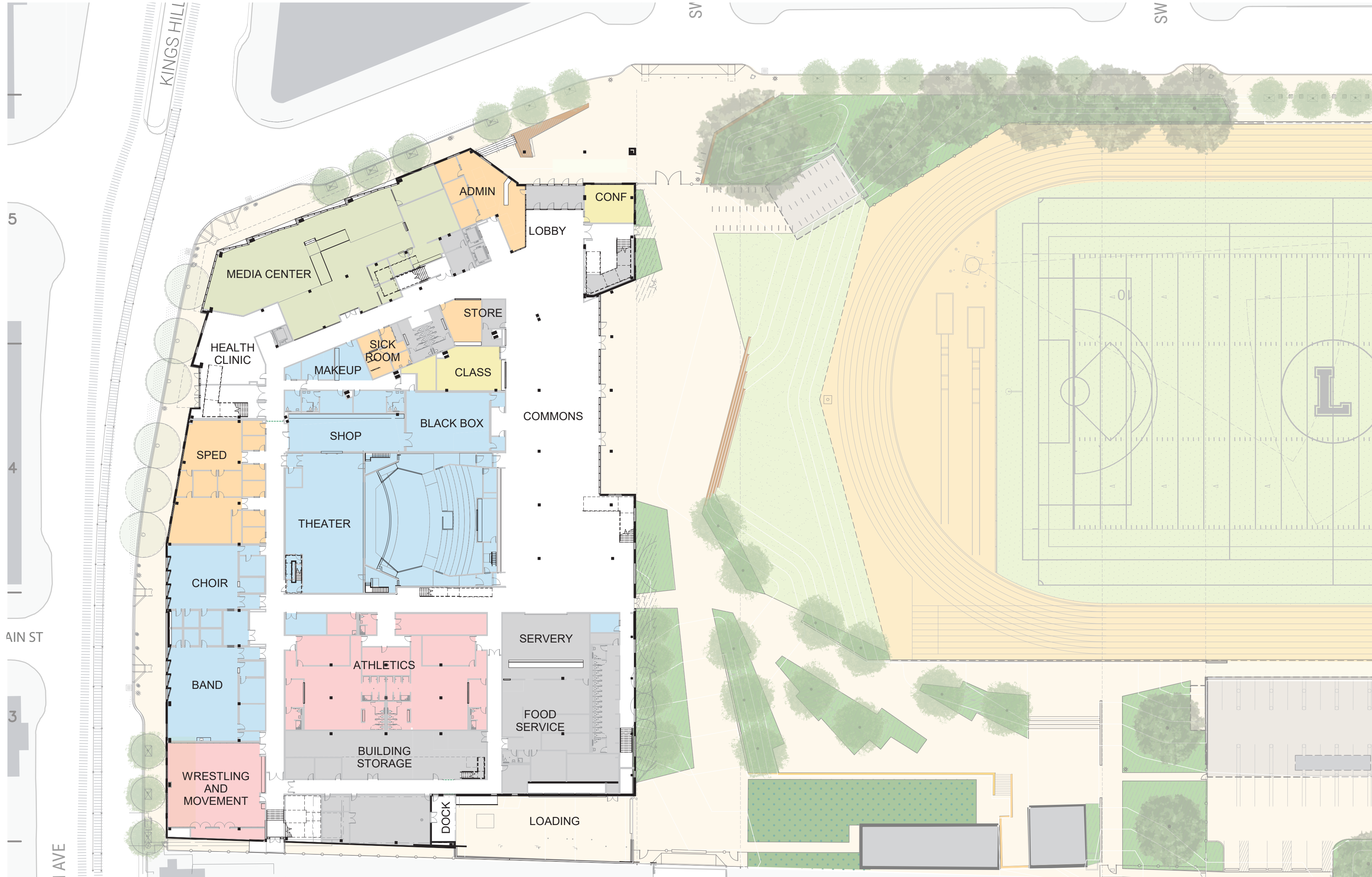
PUBLIC REALM PROGRAMMING



0 40 80 160

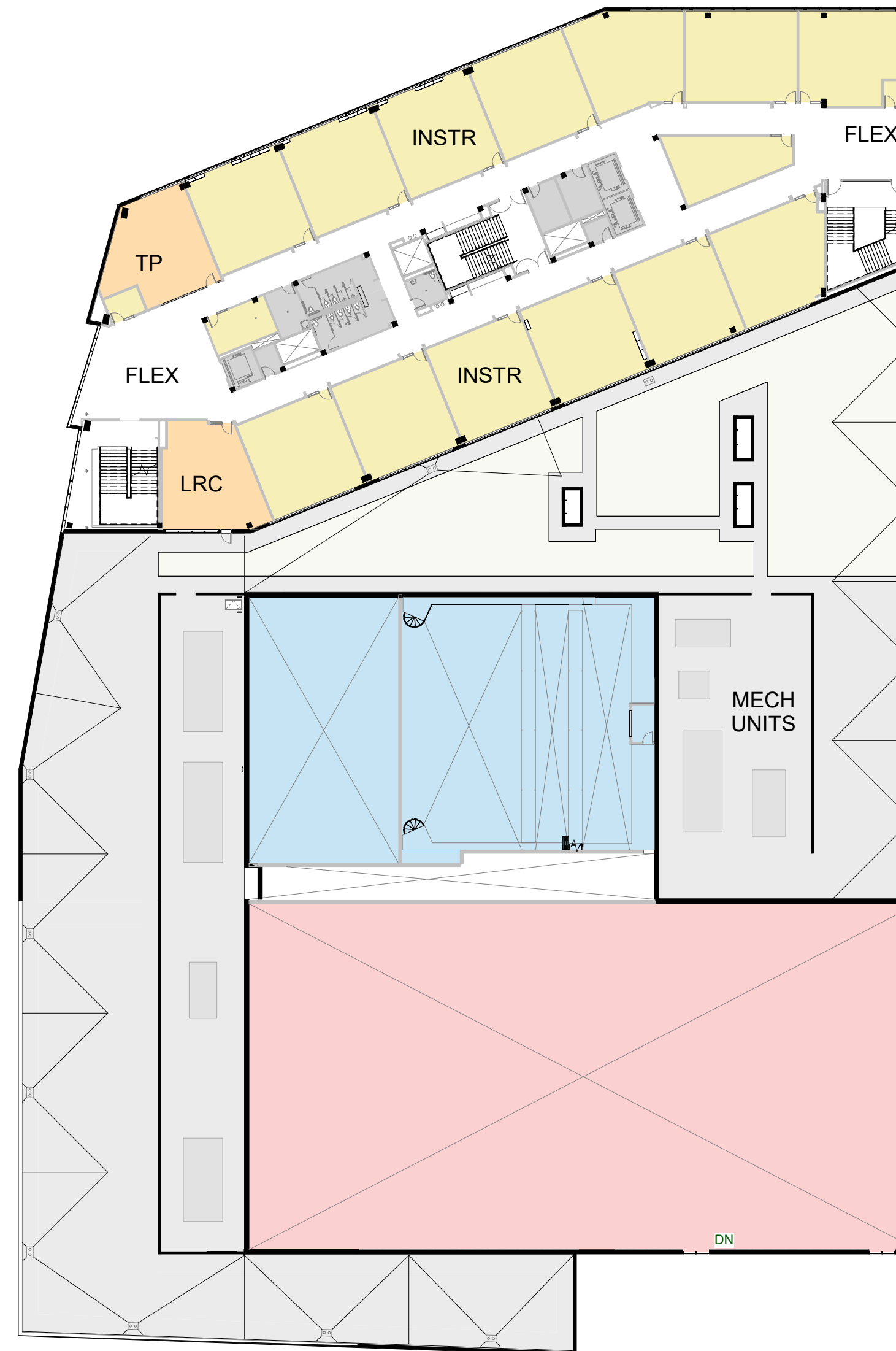
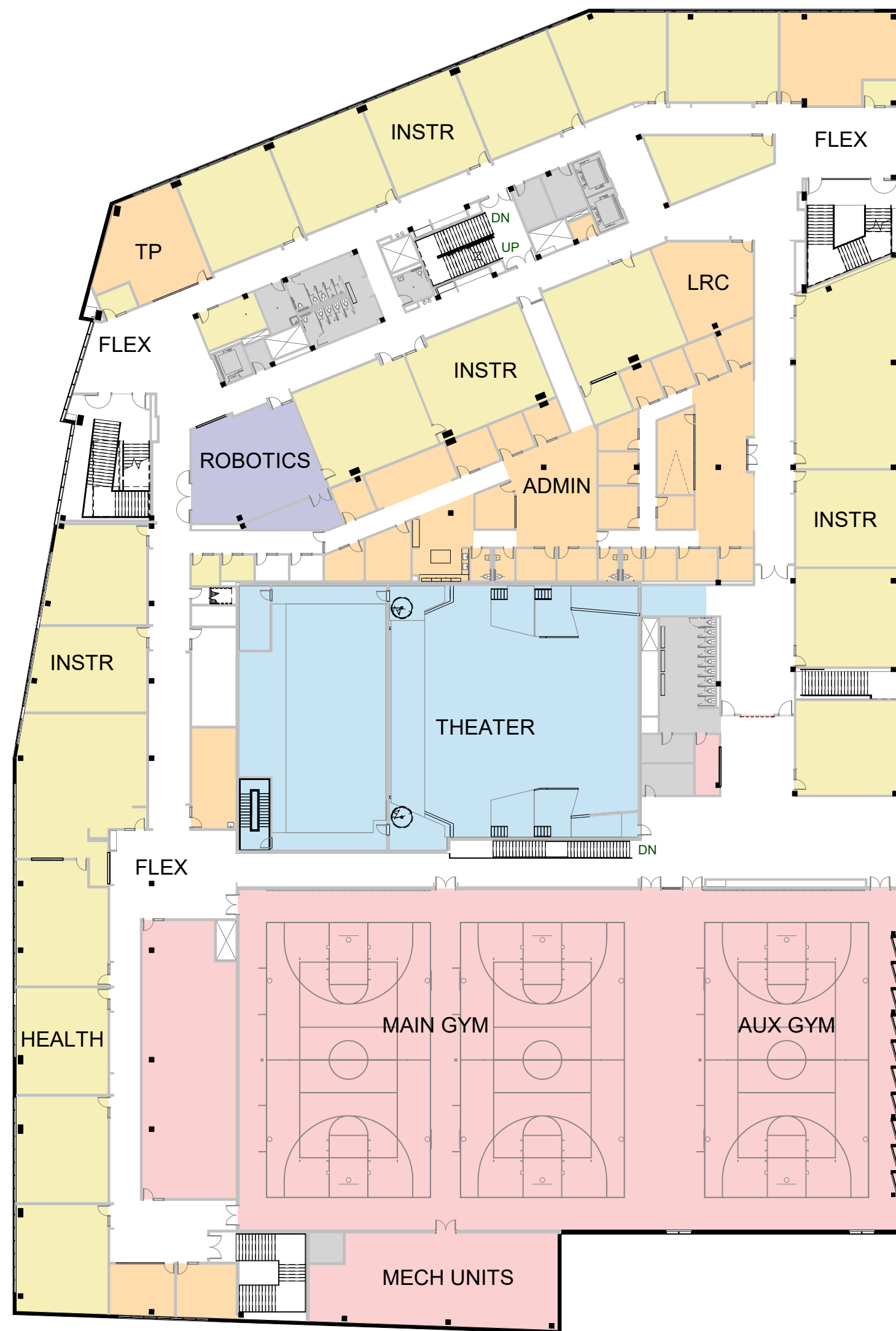


FLOOR PLANS GROUND



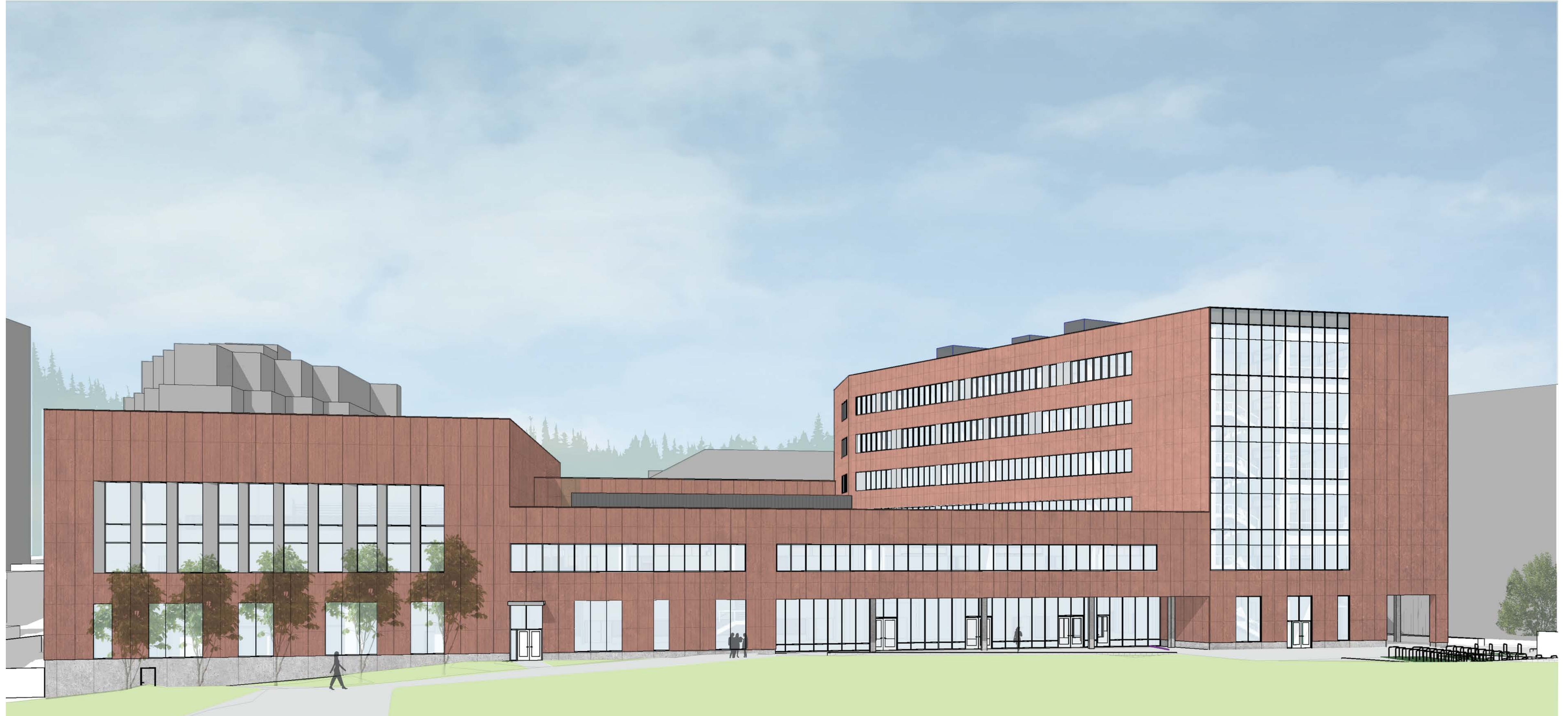
- INSTRUCTIONAL, TECH ACCESS
- ADMIN, COUNSELING, SPED
- FINE AND PERFORMING ARTS
- ATHLETICS, HEALTH
- SERVICE PROVIDERS, MISCELLANEOUS
- MEDIA CENTER
- SCIENCE

FLOOR PLANS SECOND AND THIRD



- INSTRUCTIONAL, TECH ACCESS
- ADMIN, COUNSELING, SPED
- FINE AND PERFORMING ARTS
- ATHLETICS, HEALTH
- SERVICE PROVIDERS, MISCELLANEOUS
- MEDIA CENTER
- SCIENCE

VIEW FROM ATHLETIC FIELDS



VIEW FROM SW SALMON STREET



VIEW FROM SW 18TH AVENUE



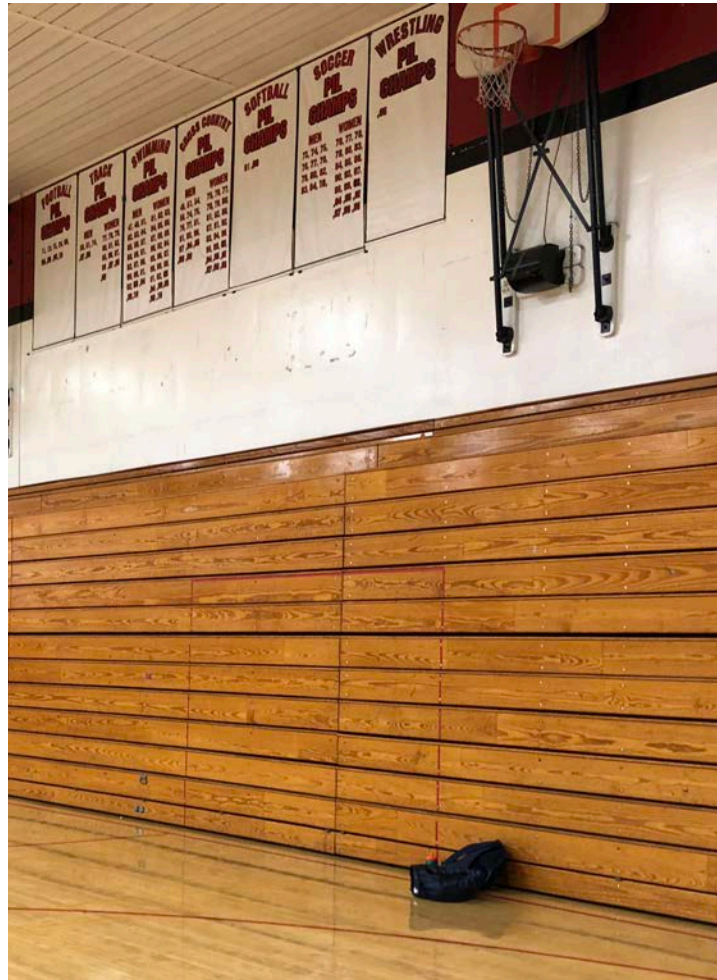
VIEW FROM SW 17TH AVENUE



VIEW FROM SW 18TH AVENUE LOOKING NORTHEAST



ARTIFACTS ACTIVITY



ARTIFACT A
Bleacher seating



ARTIFACT B
Elliot Smith Plaque



ARTIFACT C
Setziol Art Piece



ARTIFACT D
Benson Bubbler



ARTIFACT E
Fish Mosaic



ARTIFACT F
Fallout Shelter



ARTIFACT G
LHS Piano



ARTIFACT H
Queen of Rosaria



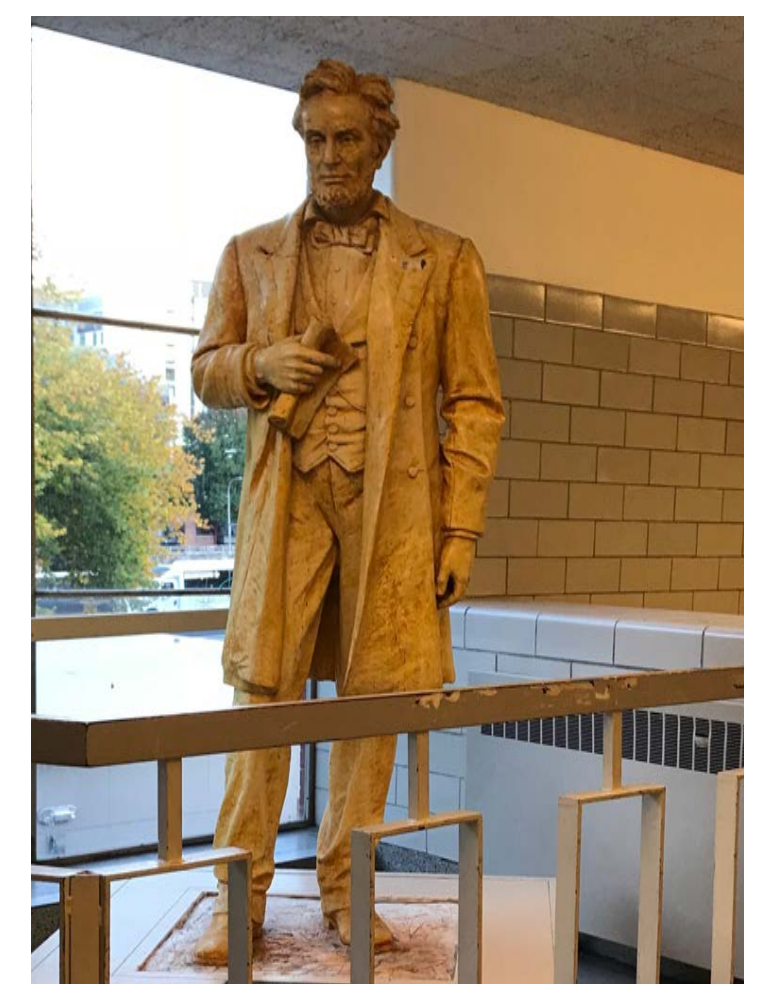
ARTIFACT I
Abraham Lincoln Bust



ARTIFACT J
Hardy Herons



ARTIFACT K
Bart Simpson Sidewalk



ARTIFACT L
Abraham Lincoln Statue

PUBLIC COMMENTS

THANK YOU